



Icon®

Caries Infiltration



WHAT IS CARIES INFILTRATION WITH ICON?

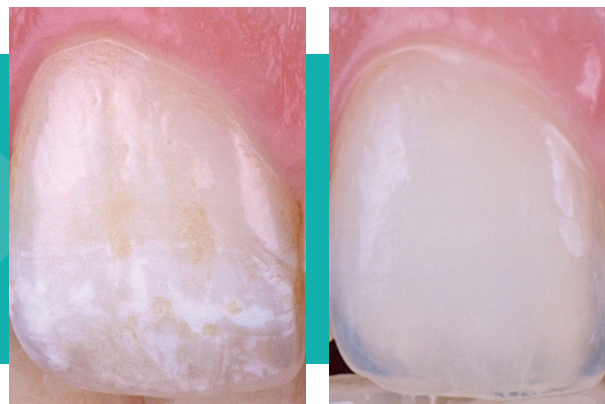
Caries infiltration with Icon is an innovative, minimally invasive treatment for early carious lesions that uses an infiltrating resin to block the progression of the lesion, and does not require drilling or anesthesia.

AM I A CANDIDATE FOR TREATMENT?

Resin infiltration is case selective and its success is defined by choosing the right candidates. Where tooth decay is identified early enough, Icon can be effective an effective solution! Candidates include those with early carious lesions, up to the first third of dentin. In some cases, Icon may be effective for deeper seated lesions.

BENEFITS OF ICON CARIES INFILTRATION

- ↗ Esthetic results on smooth surfaces
- ↗ No drilling or anesthesia
- ↗ One, quick patient visit
- ↗ Microinvasive technology
- ↗ Preserve healthy tooth structure



IS THERE AN INSURANCE CODE?

Resin infiltration is now recognized with the CDT Code D2990.



WHAT TYPE OF RESULTS ARE TYPICAL

Results will vary by proper case selection. For successful smooth surface enamel lesion treatments, Icon will block the progression of the lesion, and since it's refractive index is close to that of healthy enamel, the lesion will be restored to look like healthy enamel. For success interproximally, Icon will block the lesion's progression.