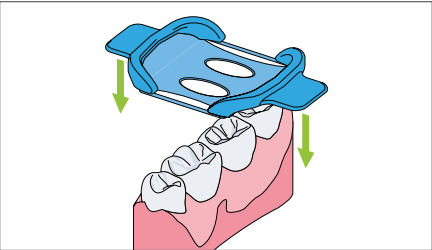
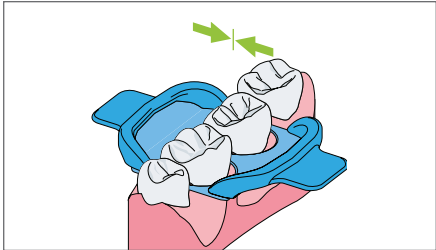


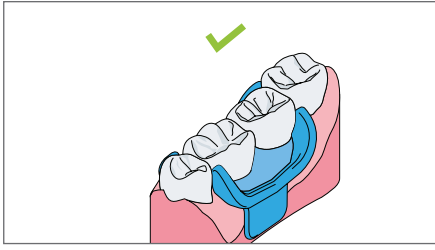
Quick Protection – Where it’s needed: DMG MiniDam



Stretch the DMG MiniDam and pull towards the gingiva.



Release the DMG MiniDam and fold cervically.



The DMG MiniDam stays in place securely without clamps.

LOCAL PROTECTION AND DRYNESS

The DMG MiniDam protects the proximal region during treatment – quickly, easily and comfortably for patients. The practical silicone auxiliary ensures that the site being treated is sufficiently dry. At the same time, the gingiva is protected from the materials being used, e.g. etching gel.



SECURE QUICKER

The DMG MiniDam can be placed by one person in just a few seconds and stabilizes itself – without clamps – making it extremely convenient for the dentist and comfortable for the patient. The material is latex-free and therefore harmless for allergy sufferers.

Thanks to the DMG MiniDam, procedures in the proximal area, which also include caries infiltration, can be completed more quickly.

Ordering Information

Item#	Product	Contents
220400	Icon Proximal Mini Kit	2 Patient Packs each including: 1-0.30ml Syringe Icon Etch 1-0.45ml Syringe Icon Dry 1-0.45ml Syringe Icon Infiltrant 6 Proximal Tips 1 Luer-Lock Tip 4 Dental Wedges
220401	Icon Proximal Cube	7 Patient Packs each including: 1-0.30ml Syringe Icon Etch 1-0.45ml Syringe Icon Dry 1-0.45ml Syringe Icon Infiltrant 6 Proximal Tips 1 Luer-Lock Tip 4 Dental Wedges
220381	DMG MiniDam	20 Pieces

DMG America, LLC
65 Challenger Road, Suite 340, Ridgefield Park, NJ 07660
tel: 800.662.6383 email: info@dmg-america.com
web: www.dmg-america.com

VER_081519



Patients prefer Icon®.

- ✓ No anesthesia
- ✓ No drilling
- ✓ One visit



Icon Proximal
Arrest early caries



Challenges in the practice

AREAS BETWEEN TEETH ARE AT RISK AND DIFFICULT TO ACCESS.

Proximal areas are not only a problem when brushing. Caries can form quickly, which are difficult not only to detect, but also for the dentist to reach physically.

Can't treat proximal caries without being invasive?

Icon can.



Invasive treatment leads to a large loss of healthy tooth structure. Particularly in cases of proximal caries, there is an unfavorable ratio of healthy tooth to caries that must be removed.

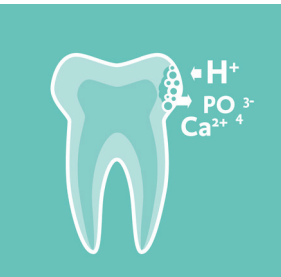
Icon: The answer

Caries infiltration with Icon fills the gap between prophylaxis and filling, while also optically blending in the lesion with the healthy enamel.

AN INGENUOUSLY SIMPLE PRINCIPLE

The infiltration method is simple: After pre-treatment with Icon-Etch, the infiltrant, a highly fluid resin, is applied to the affected area. Capillary action draws the infiltrant deep into the porous enamel, and it is then light-cured. This blocks the penetration of cariogenic acids. The incipient caries can be stopped quickly and without drilling, anesthesia or pain.

Healthy tooth structure is preserved.



Incipient caries before treatment:
Cariogenic acids attack the enamel and draw out minerals. The tooth becomes porous.

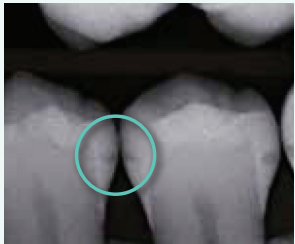
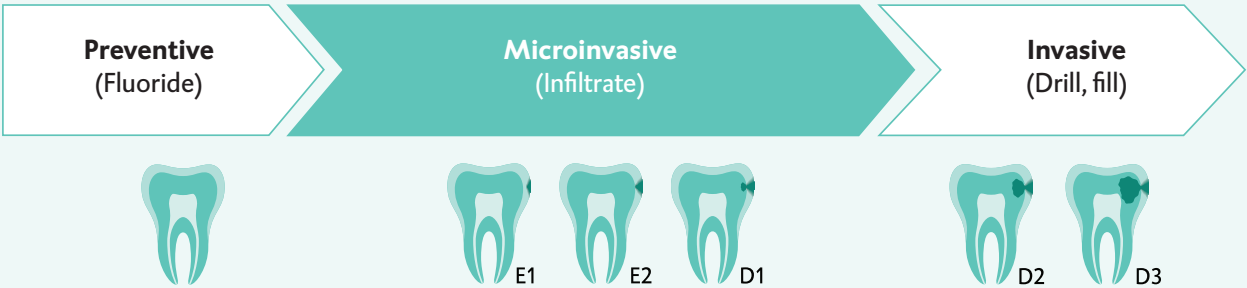


After treatment:
By sealing the pore system, acids can no longer penetrate into the lesion, stopping the progression of the caries at an early stage.

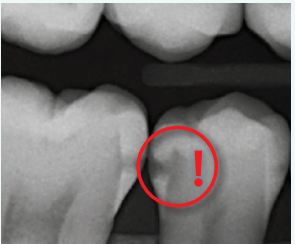


Icon Proximal fills the gap between fluoride and filling

- ✓ No anesthesia
- ✓ No drilling
- ✓ One visit



Icon can effectively arrest the progression of caries that x-rays show have not advanced farther than the outer third of the dentin (E1-D1).



If x-rays show the lesion has advanced past the outer third of the dentin, treatment with Icon is no longer indicated. In this case, traditional invasive therapy is required.

FEATURES AND BENEFITS

- Esthetic results on smooth surfaces
- Arrest the progression of caries at an early stage
- Preserve healthy tooth structure
- Pain-free method, without anesthesia, or drilling
- One quick and simple patient visit

Treatable lesions per package		
Package Contents	Mini-Kit	Cube
Treatable Teeth	4	14
Patient Packs	2	7



The infiltration treatment consists of 3 easy steps:

1. ICON-ETCH: Prepare the surface

Apply the HCl-Gel to the affected area with our special applicator tip, removing the pseudo-intact surface layer. Once this layer has been removed, the infiltrant can penetrate into the pore system of the tooth.

2. ICON-DRY

The lesion is dried with Icon-Dry (ethanol) and air to offer a protective final coat.

3. ICON-INFILTRANT

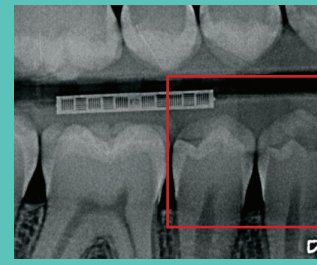
The low viscosity infiltrant is applied, and penetrates deep into the enamel through capillary action. It is then light-cured for 40 seconds each, on all sides.

The infiltrated lesion has similar mechanical and visual properties to healthy enamel.

ICON PROXIMAL



Initial clinical situation.



Bitewing X-ray.



Separation with dental wedge.



Etching.



Drying.



Infiltrating.



Removal of excess.



Light-curing.

Tips from the practice:

EXACT DIAGNOSIS WITH BITEWING X-RAYS

- Make use of bitewing x-rays for early diagnosis of proximal lesions.
- Check the necessity of x-ray images in advance, for example through the use of fiber-optic transillumination devices.

DOCUMENTATION IN PATIENT RECORDS

- Icon is not radiopaque.
- Certain filler materials are necessary to make it radiopaque, which negatively affect the infiltrant's flow properties, and therefore its penetrative ability.
- In order to document the procedure properly, the patient card included in every package should be marked and filed appropriately.

PROPERLY SEPARATE THE TEETH

- It is best to proceed slowly with the tooth separation, a bit like stretching out a muscle. The tissue has to respond to the increase in pressure.
- Insert the wedge between the teeth until you feel resistance. Hold the wedge in position for several seconds. Softly push the wedge further until the widest part of the wedge creates enough separation between the teeth.
- Alternatively, orthodontic rubber rings (separating rubber) can also be used for separation. These should be placed 1 hour to 1 day before the infiltration treatment.

DRY WORKING FIELD

- Sufficiently drying the area is critical and easily achieved within seconds with the DMG MiniDam.
- The silicone protection can be quickly applied by just one person and stabilizes itself – without clamps.

