

Can't change your spots?  
**Icon<sup>®</sup>can.**



**Icon Smooth Surface**  
Effective treatment for white spots



# Challenges in the dental practice

## INITIAL CRIES CAUSES DISCOLORATION ON SMOOTH SURFACES

Until now, there was no truly effective treatment option available for these cariogenic white spots, which are often visible after bracket removal.

## NOT EVERY SPOT IS A CARIOGENIC WHITE SPOT

So, how can fluorosis or enamel developmental defects be treated in a way that is permanently effective, efficient and comfortable for the patient?

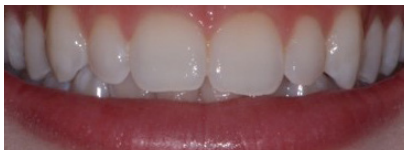
Bleaching alone will not achieve a consistently effective result in most cases of tooth discoloration, and invasive treatment methods like veneer restorations are time-consuming and costly. Plus, they always involve sacrificing healthy tooth substance.

## CAN THIS PROBLEM BE RESOLVED RELIABLY AND PAIN FREE?

**Icon can.**

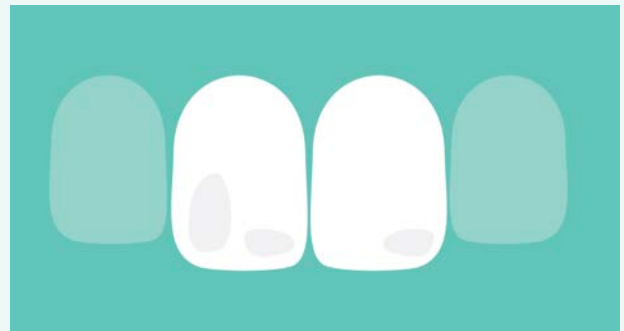


Before Icon treatment.



After Icon treatment.

## WHITE SPOT TREATMENT WITH ICON



Before treatment, caries, fluorosis or enamel developmental defects have caused unesthetic discoloration.



After being prepared with an etching gel, a liquid resin is applied, which penetrates into the porous tooth tissue where it is cured under light.



The porous tissue is filled, and the infiltrated area adapts optically to the healthy tooth, thanks to a similar refractive index of infiltrant and enamel.

# The answer: Caries infiltration treatment with Icon

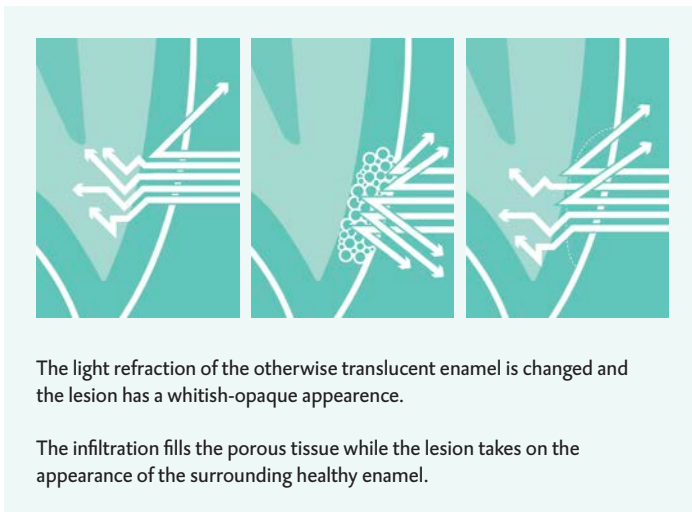
Caries infiltration with Icon fills the gap between prophylaxis and filling. It also optically blends in the lesion with the healthy enamel, allowing the innovative method to be used for esthetic treatments of front teeth, where appearance plays an important role.

## AN INGENUOUSLY SIMPLE PRINCIPLE

The infiltration method is simple. After pretreatment with Icon Etch, a highly fluid resin (Icon Infiltrant) is applied to the affected area. Capillary action draws the infiltrant deep into the porous enamel, and it is then light-cured.

The infiltrated area visually takes on the appearance of the surrounding healthy enamel.

Healthy tooth structure is preserved.



The light refraction of the otherwise translucent enamel is changed and the lesion has a whitish-opaque appearance.

The infiltration fills the porous tissue while the lesion takes on the appearance of the surrounding healthy enamel.

## FEATURES AND BENEFITS

- Esthetic results on smooth surfaces
- Caries are arrested at an early stage
- Healthy tooth structure is preserved
- No anesthesia or drilling required
- Teeth are restored back to their natural shade
- One quick and easy patient visit

Treatable lesions guide		
Package Contents	Mini-Kit	Cube
Treatable teeth	3-5	21-35
Patient Packs Included	2	7



# The infiltration treatment consists of 3 easy steps:

## 1. ICON ETCH: Prepare the surface

Apply the HCl-Gel to the affected area with our special applicator tip, removing the pseudo-intact surface layer. Once this layer has been successfully removed, the infiltrant can penetrate into the pore system of the tooth.

The etching step can be repeated up to two more times if needed.

## 2. ICON DRY

Dry the lesion with Icon Dry (ethanol) and air for visual inspection and to offer a protective final coat.

## 3. ICON INFILTRANT

Apply the infiltrant and allow it to penetrate deep into the enamel through capillary action. Then, light cure for 40 seconds each on all sides.

The infiltrated lesion has similar mechanical and visual properties to healthy enamel.

### ICON AND WHITE SPOTS



Initial situation: White spots after removing braces.



Result after treating with Icon Etch.



Drying and visual check with Icon Dry.



Application of Icon Infiltrant.



Repeated application of Infiltrant.



Result directly after light-curing.



Result after polishing.



One week after treatment.





# Tips from the practice:

## PROPER ETCH

- › For successful esthetic treatment of white spots, the lesion must be fully accessible to the infiltrant.
- › You may etch multiple times (up to 3x) if there is a very thick pseudo-intact surface layer.
- › If the white discoloration disappears within a few seconds when ethanol (Icon Dry) is applied, then it is successfully etched and ready for infiltration.
- › If the opaque discoloration remains, then the etching process should be repeated. Etching up to three times for two minutes per lesion is possible.
- › Alternatively, the lesion can also be prepared for the infiltration through light abrasion with a polishing disc, micro abrasion or sand blasting before the etching step.

## BEFORE/AFTER DOCUMENTATION

- › Optimize your patient communication process by taking before and after pictures.

## FLUOROSIS AND OTHER WHITE SPOTS

- › Even non-cariogenic enamel changes can be treated with Icon.
- › The effectiveness with mild-to-moderate fluorosis has been scientifically proven.
- › Experience in the dental practice has shown that: Even patients with traumatic changes or mildly pronounced MIH can be treated successfully, whereby carrying out several etching steps proved effective. This has not yet been confirmed by clinical trials.



# Ordering Information

Item#	Product Name	Contents
220402	Icon Smooth Surface Mini Kit	2 Patient Packs each including: 1-.45ml Syringe Icon Etch 1-.45ml Syringe Icon Dry 1-.45ml Syringe Icon Infiltrant 6 Smooth Surface Tips 1 Luer-Lock Tip
220403	Icon Smooth Surface Cube	7 Patient Packs each including: 1-.45ml Syringe Icon Etch 1-.45ml Syringe Icon Dry 1-.45ml Syringe Icon Infiltrant 6 Smooth Surface Tips 1 Luer-Lock Tip
220385	Icon Etch Refill	3-.45ml Syringes Icon Etch 15 Smooth Surface Tips



DMG America, LLC  
65 Challenger Road, Suite 340, Ridgely Park, NJ 07660  
tel: 800.662.6383 email: info@dmg-america.com  
web: www.dmg-america.com

